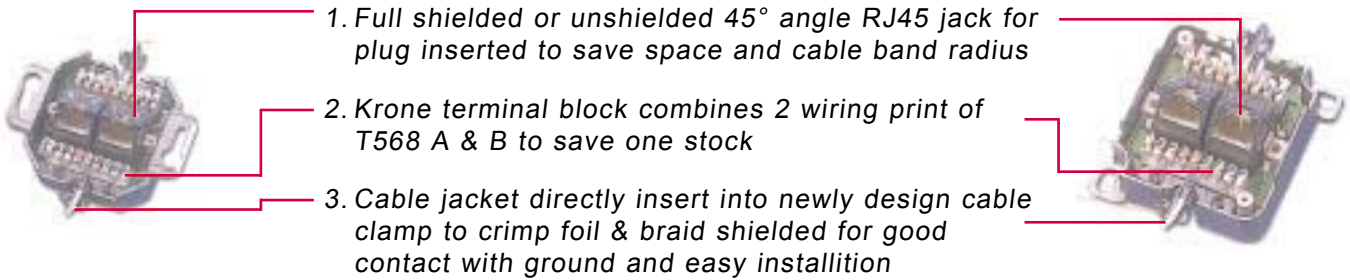


DATASHEET

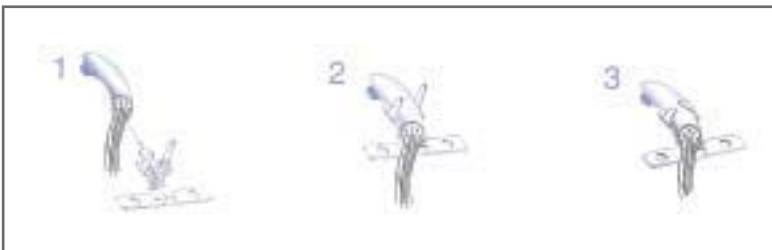
CAT.6 Flush Mounted Plate & Surface Mounted Box



Our CAT.6 flush mounted plate and surface mounted wall box are used for high speed LAN's transmission rates up to Gigabit @ 250MHz, these jacks are developed with a proprietary printed circuit board technology which results in performance to meet TIA/EIA-568-B.2 specifications. Providing 2x full shielded, RJ45 jack on 45° angle for space saving plug insert and cable clamp for easy installation. Packing: 5 pcs./pack, 20 packs/carton



1. Full shielded or unshielded 45° angle RJ45 jack for plug inserted to save space and cable bend radius
2. Krone terminal block combines 2 wiring print of T568 A & B to save one stock
3. Cable jacket directly insert into newly design cable clamp to crimp foil & braid shielded for good contact with ground and easy installation



KRONE Terminal Block



PIN ——— 8 7 6 3 2 1 4 5
ASSIGNMENT



A= T568A
B= T568B



Flush mounted
white RAL9003 125762
ivory RAL1013 125765



Surface mounted
white RAL9003 125764
ivory RAL1013 125766